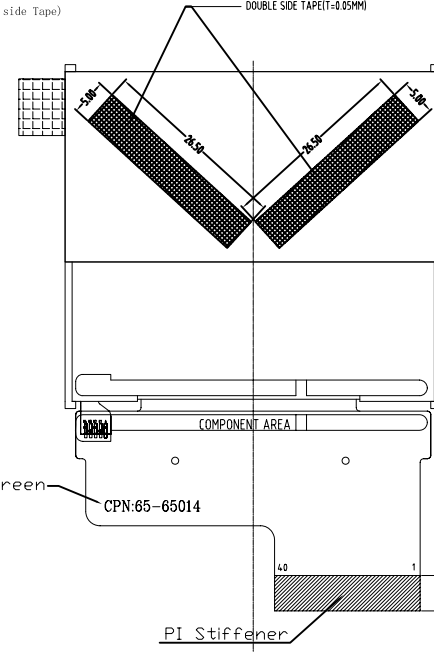
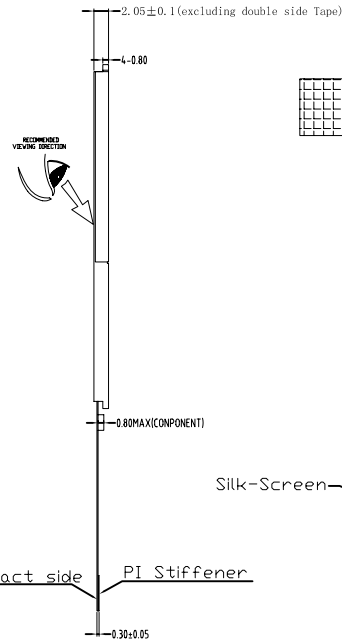
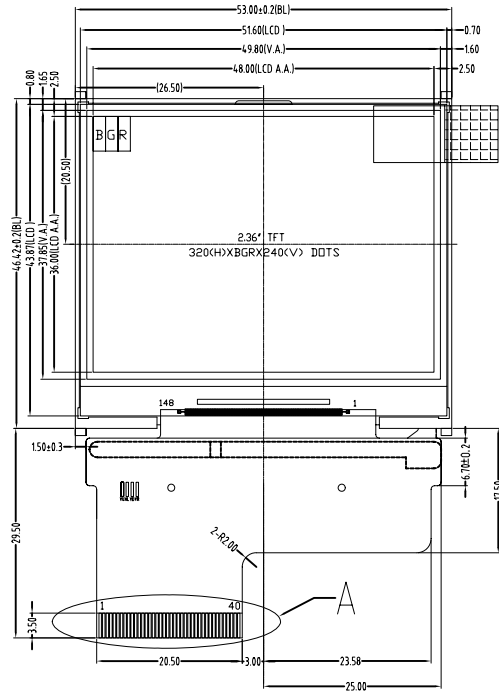
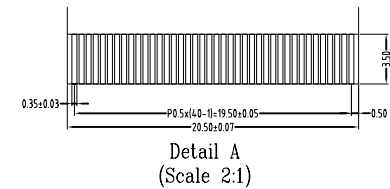
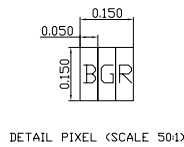
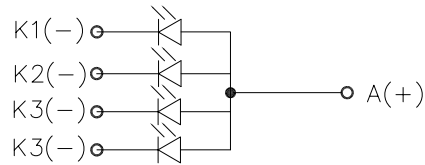




1	YU	21	DB10
2	XL	22	DB11
3	YD	23	DB12
4	XR	24	DB13
5	GND	25	DB14
6	GND	26	DB15
7	IOVCC	27	DB16
8	VCC	28	DB17
9	FMARK	29	CSX
10	nRESET	30	SCL
11	DB0	31	SDI
12	DB1	32	DE
13	DB2	33	PCLK
14	DB3	34	HSYNC
15	DB4	35	VSYNC
16	DB5	36	LEDA
17	DB6	37	LEDK1
18	DB7	38	LEDK2
19	DB8	39	LEDK3
20	DB9	40	LEDK4



*BS3-BS0 IS SET TO 1101 in the FPC



NOTES:

1. DISPLAY TYPE:
MAIN LCD: 262K TFT, TRANSMISIVE, Normally White
2. VIEWING ANGLE: 12:00
3. OPERATING TEMP: -20°C~70°C
4. STORAGE TEMP: -30°C~80°C
5. MAIN LCD DRIVER: HX8368-A
6. BACKLIGHT: 4CHIP-WHITE LED, PARALLEL CONNECTION
7. ROHS COMPLIANCY
8. GENERAL TOLERANCE: ±0.2MM
9. TO MATE WITH TYCD 4-1734592-0

CUSTOMER APVL	CUSTOMER	DATE	2012/08/02
DRAWN BY	SCALE 1/1	TITLE	
DFTG CHK	UNIT mm	MI0240VT-4 SKETCH-C	
ENGR CHK		MODEL	
APPROVAL			
MULTI-INNO TECHNOLOGY CO.,LTD.		DWG NO V01	PAGE 1