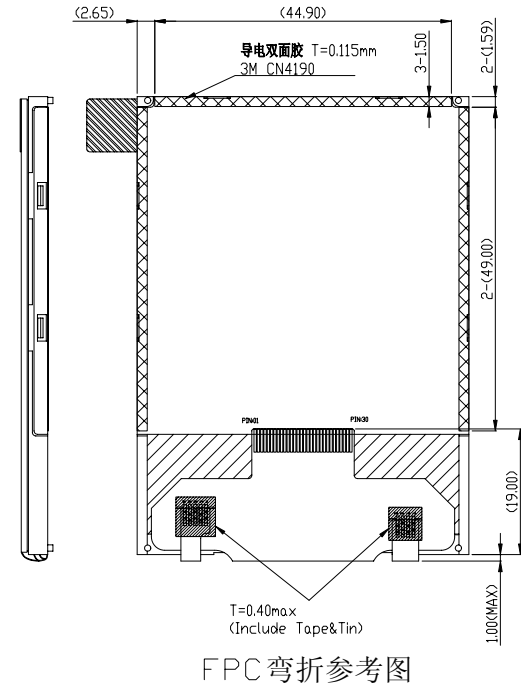
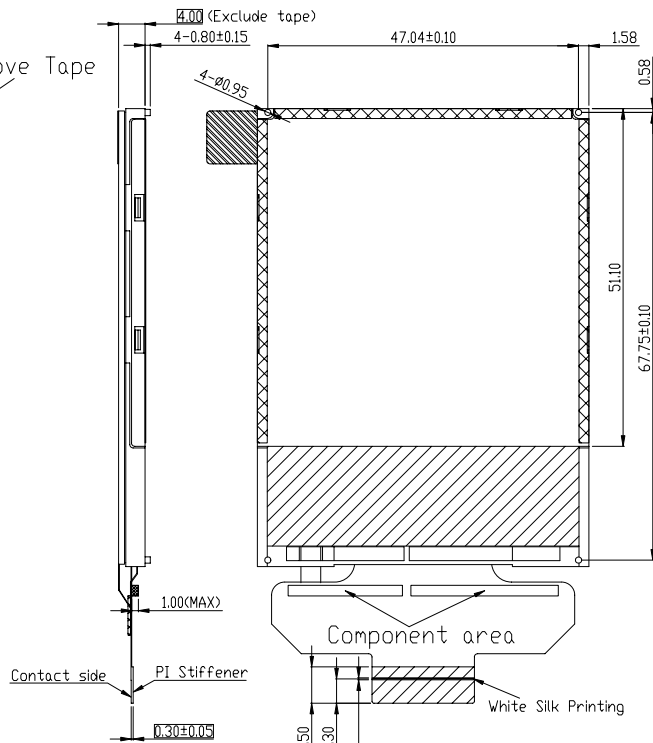
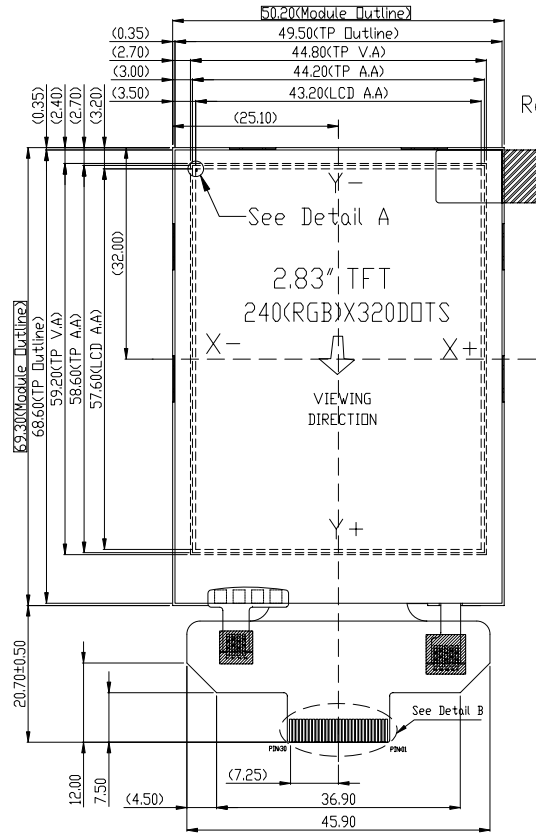
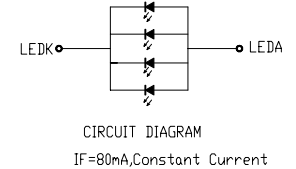
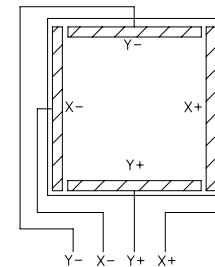




1	LEDK
2	LEDA
3	RESET
4	DB15
5	DB14
6	DB13
7	DB12
8	DB11
9	DB10
10	DB9
11	DB8
12	DB7
13	DB6
14	DB5
15	DB4
16	DB3
17	DB2
18	DB1
19	DB0
20	RD
21	WR
22	RS
23	CS
24	IDVCC
25	GND
26	X+
27	Y+
28	X-
29	Y-
30	NC

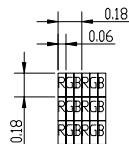


FPC 弯折参考图

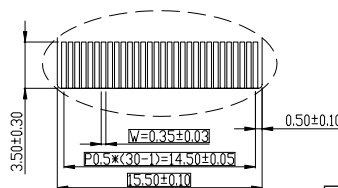


NOTES:

1. DISPLAY TYPE: TFT
2. VIEWING DIRECTION: 12:00
3. POLARIZER MODE: TRANSMISSIVE/POSITIVE
4. DRIVE METHOD: 1/320 DUTY
5. IOVCC=2.8V (TYP),
6. OPERATING TEMP: -20° C — +70° C
7. STORAGE TEMP: -30° C — +80° C
8. LCD DRIVE IC: ILI9341
9. CONNECTION: FPC
10. BACKLIGHT: 4CHIP-WHITE LED/80mA/3.2V (TYP)
11. UNMARKED TOLERANCE: ±0.20
12. REQUIREMENTS ON ENVIRONMENTAL PROTECTION: RoHS
13. THE CONTROLLED DIMENSION MASK TO BE
14. REFERENCE DIMENSION MASK TO BE ()



Detail A
Scale 20:1



Detail B
Scale 2:1

CUSTOMER APVL	CUSTOMER	DATE	
DRAWN	SCALE	TITLE	
DFTG CHK	UNIT	MI0283QT-8	
ENGR CHK	mm	MODEL	
APPROVAL		DWG NO	PAGE
MULTI-INNO TECHNOLOGY CO.,LTD.			1/1