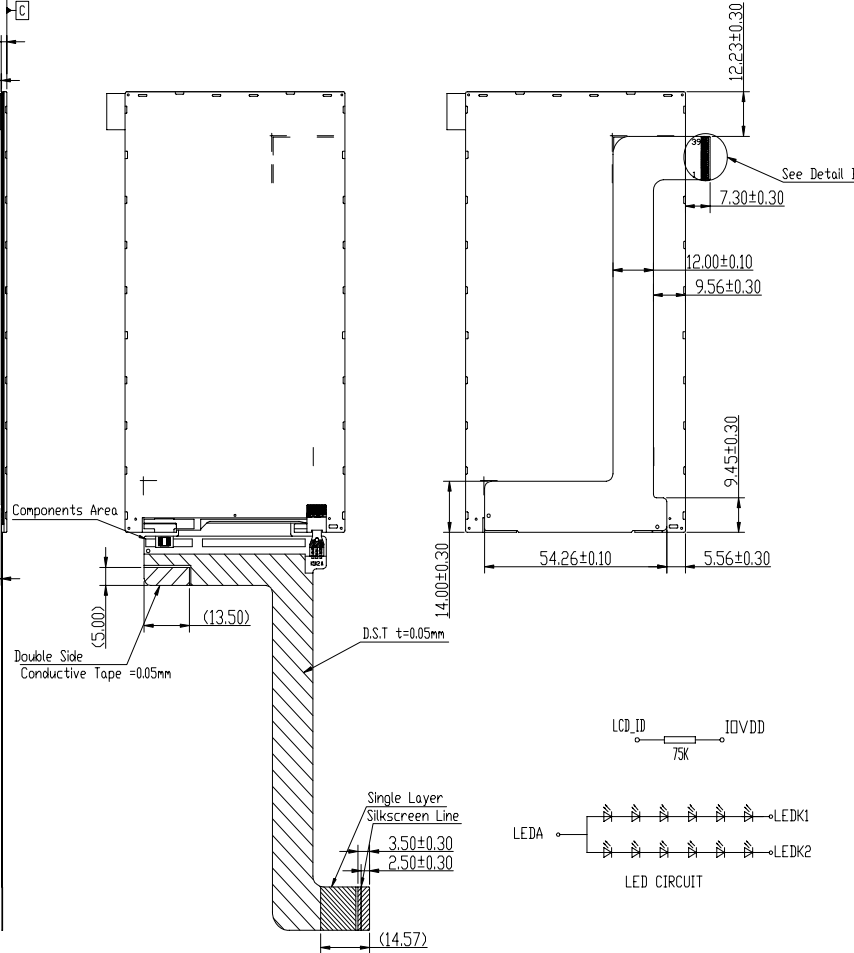
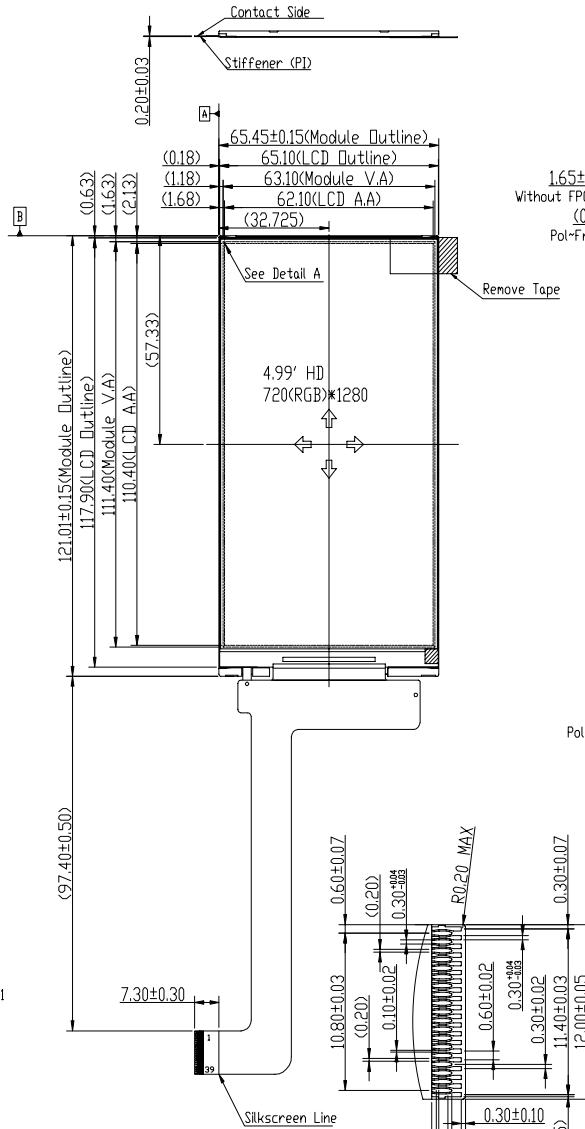




No.	PIN NAME
1	GND
2	LEDK1
3	CABC
4	LEDK2
5	GND
6	LEDA
7	GND
8	TE(CNC)
9	GND
10	GND
11	RST
12	GND
13	GND
14	MIPI_DSI_D3N
15	NC
16	MIPI_DSI_D3P
17	GND
18	MIPI_DSI_D2N
19	NC
20	MIPI_DSI_D2P
21	GND
22	MIPI_DSI_CLKN
23	NC
24	MIPI_DSI_CLKP
25	GND
26	MIPI_DSI_DIN
27	NC
28	MIPI_DSI_DIP
29	GND
30	MIPI_DSI_D0N
31	NC
32	MIPI_DSI_D0P
33	GND
34	NC
35	LCD_ID
36	IDVCC
37	VCC
38	GND
39	GND



- NOTES:
1. Display Type: a-Si TFT;
  2. View Direction: All;
  3. Backlight: 12-chips LED;
  4. Driver ICHX8394A;
  5. Matched connector: FH26-39S-0.3SHW;
  6. General Tolerance: ±0.2;
  7. Requirements on environment protection: RoHS Compliant;
  8. Recommended Case Open Area should be less than Module V.A;
  9. Brightness 400cd/m<sup>2</sup>(Min); VF=17.4V-20.4V; IF=40mA; Uniformity 80%min;

**MIT** MULTI-INNO TECHNOLOGY CO.,LTD.

DRAWN BY:	CAROL 2014.05.28	SCALE : 1/1	MODULE P/N:
CHECKED BY:		UNIT:	MI0500XT-1
APPROVED BY:		mm	DESCRIPTION:
VERSION NO:	01		TFT MODULE

VER.	FIRST ISSUE	DATE
01	FIRST ISSUE	2014.05.28
VER.	REVISED DESCRIPTION	DATE